



2019 Project Review Sheet (2020 Construction)

City Council District 7 (Ballot # 7E)

Project #	19-288
Project Title:	Fix broken pavement
Location:	Neighborhood: North Queen Anne, 98119 Area: 3rd Ave. W. between W. Ewing St. and W. Nickerson St.

SDOT Contact Information

SDOT Reviewer Name: Howard Wu
Reviewer Phone Number: 206.684.3902
Review Date: August 1, 2019

SDOT Project Summary

SDOT approves project

- Yes
 Yes, with revisions
 No

Comments: SDOT reviewed the pavement conditions for this stretch and confirmed the need for some maintenance work for this section.

There is an opportunity to partner with another program:

- Yes
 No

Partnering Program: SDOT's Non-Arterial Streets Repair and Restoration Program

Total Project Cost: \$130,000

YVYC 2019: Project 19-288, 3rd Ave. W. between W. Ewing St. and W. Nickerson St.



Solution and Comments:

This review has been completed for use in the 2019 Your Voice, Your Choice: Parks & Streets process.

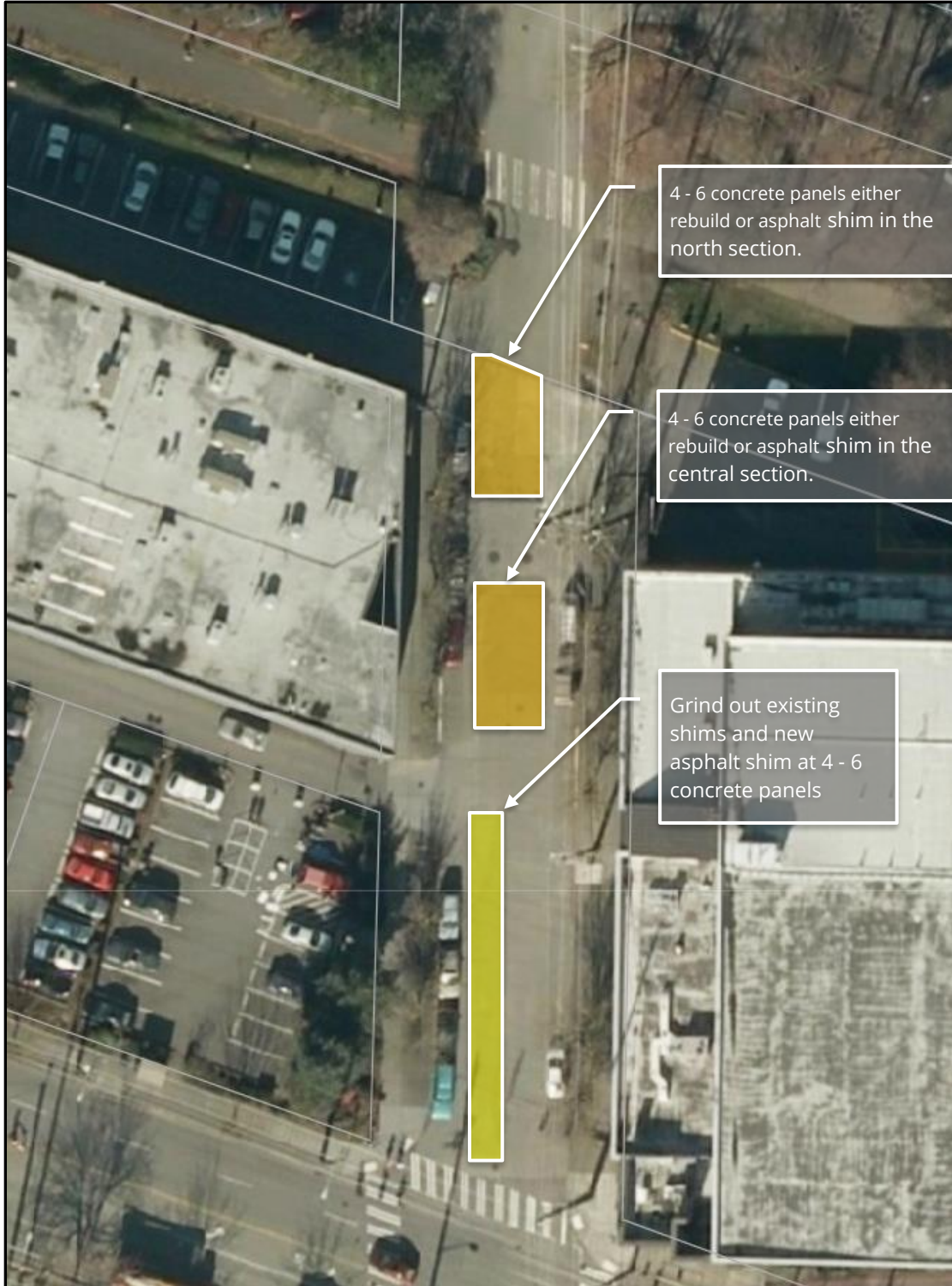
A site visit was made on July 31, 2019 to assess the condition of the pavement. Two areas were identified that needed the most attention, which were:

- 4 - 6 panels in the middle of the block, and
- 4 - 6 panels on the north end of the block by W Ewing St and the Ship Canal Trail.

The next section of concern for pavement repairs is on the south half of the block towards W Nickerson St for the southbound travel lane. For the two areas in need of the most attention, the panels could either get rebuilt or receive asphalt shimming. For the southbound travel lanes, the existing shims would be scrapped off and new asphalt shims would replace it. The cost for rebuilding the worst panel and shimming the remaining panels would cost around \$130,000.



Image:



YVYC 2019: Project 19-288, 3rd Ave. W. between W. Ewing St. and W. Nickerson St.



Figure 1: North Section Facing South



Figure 2: North Section Facing North

YVYC 2019: Project 19-288, 3rd Ave. W. between W. Ewing St. and W. Nickerson St.



Figure 3: Close Up on the Panel Settlement in the North Section



Figure 4: Middle Section Facing South



Figure 5: Close Up on the Panel Settlement for the Middle Area



Figure 6: Middle Section Facing Southwest



Figure 7: South Section Facing South



Figure 8: Close Up on the Panel Settlement for the South Section



Information Provided by Community Members

Project Idea: Fix broken pavement

Need for Project: Severely degraded pavement, especially creates hazards for bikes leaving ship canal trail

Community Benefit from Project: All road users



Risk Registry

SDOT Review	Drainage impacts	Constructability	Community process
Low	Low	Medium - hidden panel damage, utility cover coordination	Low

Cost Estimate

Design Phase	
Preliminary Engineering (Survey) Costs	\$0
Project Management Costs (City Labor)	\$0
Design Costs (Consultant Fees, if externally designed, internal labor otherwise)	\$0
Subtotal - Design Phase Costs	\$0
Design Contingency (10% of Design Phase Subtotal)	\$0
Total Design Phase Costs	\$0
Construction Phase	
Construction Costs (include urban forestry, signs & markings, traffic control, layout or construction staking as necessary)	\$90,000
Drainage Costs	\$0
Estimating Contingency (10-20%)	\$10,000
Subtotal - Construction Costs	\$100,000
Construction Management (10-25% of Construction Cost)	\$10,000
Construction Contingency (20%)	\$20,000
Total Construction Phase Costs	\$130,000
Total Project Cost = Total Design and Construction Phase Costs	\$130,000